

# Lafayette High School



## BUILDING SCORE

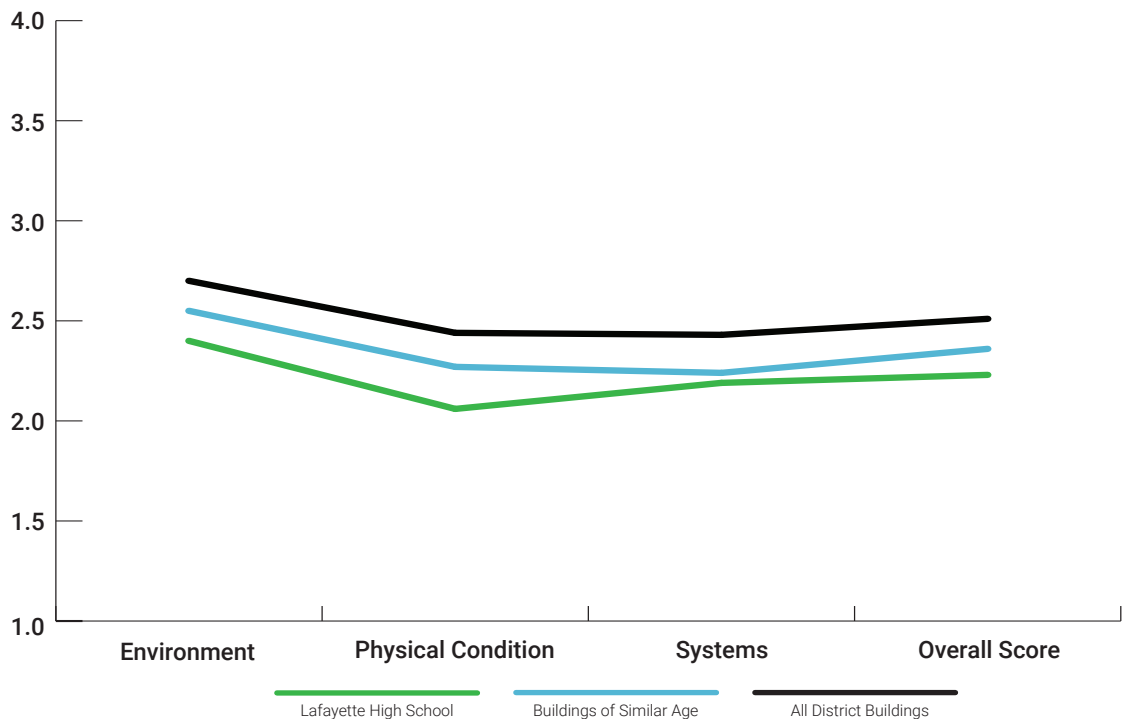
# 2.23

building score can range from 1.00 - 4.00

## ALL BUILDING SCORE AVERAGE

# 2.51

	Lafayette High School	Buildings of Similar Age	All District Buildings
<b>ENVIRONMENT</b> Five factors ranked on a scale of 1-4	<b>2.40</b>	<b>2.55</b>	<b>2.70</b>
<b>PHYSICAL CONDITION</b> Condition of the building, site, and furnishings, ranked on a scale of 1-4	<b>2.06</b>	<b>2.27</b>	<b>2.44</b>
<b>SYSTEMS</b> Conditions of mechanical, electrical, and plumbing systems ranked on a scale of 1-4	<b>2.19</b>	<b>2.24</b>	<b>2.43</b>
<b>OVERALL SCORE</b> Average of all date points gathered	<b>2.23</b>	<b>2.36</b>	<b>2.51</b>



# Lafayette High School

**CAPACITY**

DESE Max. Capacity	Optimum Capacity	18-19 Enrollment	5 YR Projection	10 YR Projection
1,611	1,380	775	756	684

**CONSTRUCTION**

**BUILDING SQUARE FOOTAGE 156,641 SF**

1916 Original	80,548 SF
1938 Addition	9,830 SF
1960 Addition	13,260 SF
1968 Addition	28,040 SF
1990 Addition	14,283 SF
2002 Addition	10,680 SF

**SQUARE FEET PER STUDENT**

Low for this building type / **THIS BUILDING** / High for this building type 144 SF / **202 SF** / 202 SF

**STRENGTH + CHALLENGES**

**STRENGTHS**

- Integrity of the building structure
- Exterior windows are newer and reasonably energy efficient
- Solar array

**CHALLENGES**

- Condition of HVAC and electrical systems
- Deterioration of exterior brick
- Accessibility
- Organization of interior spaces
- Design that accommodates safety and security
- Parking and pickup/dropoff space

**DESCRIPTION**

The original building is over 100 years old and the complex now includes five additions, making its plan organization inefficient. Its site has been completely developed and includes some steeply terraced areas, isolated access points, and deteriorating paving and improvements. Parking availability is limited. The masonry exterior needs repair in many places, but the building is old and grand and stout as a rock. The majority of interior materials are worn, the bleachers in need of replacement. Most building systems are outdated and should be gutted and replaced. There is no air conditioning. After a brief time spent inside, school spirit is obvious and the halls bleed green, but this should not cloud the reality that there are many capital needs for this facility.

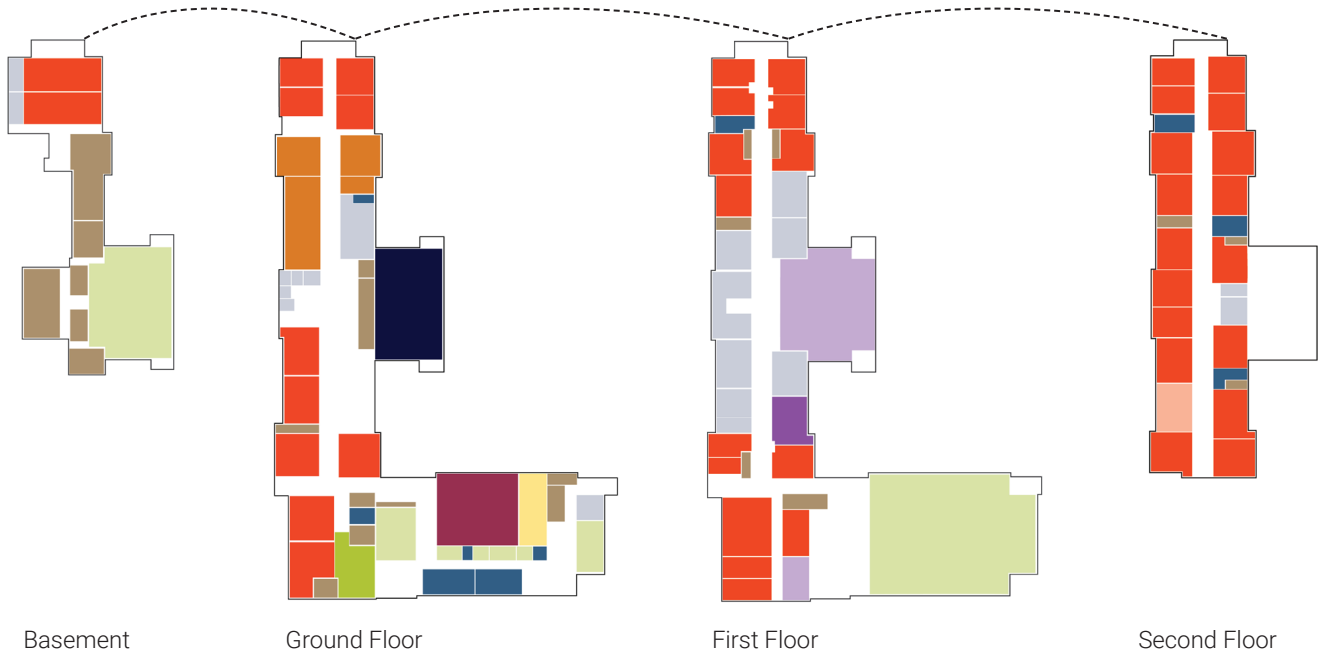
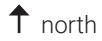
**LAFAYETTE  
HIGH SCHOOL  
SCORES**

building score  
can range from  
1.00 - 4.00

		<b>Lafayette High School</b>	<b>Buildings of Similar Age</b>	<b>All District Buildings</b>
<b>PHYSICAL CONDITION</b>	Site	<b>2.00</b>	<b>1.81</b>	<b>1.95</b>
	Fields	<b>2.00</b>	<b>2.47</b>	<b>2.48</b>
	Bleachers	<b>1.00</b>	<b>1.50</b>	<b>1.83</b>
	Envelope	<b>2.00</b>	<b>1.84</b>	<b>2.08</b>
	Roofing	<b>2.50</b>	<b>2.48</b>	<b>2.55</b>
	Interior	<b>2.00</b>	<b>2.51</b>	<b>2.65</b>
	Furniture	<b>3.00</b>	<b>2.92</b>	<b>3.09</b>
	Specialty	<b>2.00</b>	<b>2.62</b>	<b>2.86</b>
<b>ENVIRONMENT</b>	Acoustics	<b>2.00</b>	<b>3.00</b>	<b>3.09</b>
	Daylight & Views	<b>4.00</b>	<b>3.61</b>	<b>3.48</b>
	Safety & Security	<b>2.00</b>	<b>1.93</b>	<b>2.28</b>
	Way finding	<b>2.00</b>	<b>1.39</b>	<b>1.63</b>
	Thermal Comfort	<b>2.00</b>	<b>2.83</b>	<b>3.00</b>
<b>SYSTEMS</b>	HVAC	<b>2.00</b>	<b>2.56</b>	<b>2.82</b>
	Plumbing	<b>4.00</b>	<b>3.17</b>	<b>3.27</b>
	Electrical	<b>2.00</b>	<b>1.93</b>	<b>2.05</b>
	Electrical Power	<b>2.00</b>	<b>2.48</b>	<b>2.61</b>
	Electrical Systems	<b>2.00</b>	<b>1.93</b>	<b>2.08</b>
	Electrical Safety & Security	<b>2.00</b>	<b>2.21</b>	<b>2.31</b>
	Interior Lighting	<b>2.50</b>	<b>2.51</b>	<b>2.64</b>
	Exterior Lighting	<b>1.00</b>	<b>1.17</b>	<b>1.64</b>
<b>GRAND TOTAL</b>		<b>2.23</b>	<b>2.36</b>	<b>2.51</b>

**2018-19 SPACE UTILIZATION**

not to scale



- |   |   |
|---|---|
| <span style="color: red;">■</span> Classrooms               | <span style="color: cyan;">■</span> Maker Space                                 |
| <span style="color: lightcoral;">■</span> Special Programs  | <span style="color: maroon;">■</span> Dining Commons                            |
| <span style="color: orange;">■</span> Art                   | <span style="color: gray;">■</span> Administration / Counseling / Faculty Space |
| <span style="color: green;">■</span> Music   Band   Strings | <span style="color: darkblue;">■</span> Restrooms                               |
| <span style="color: lightgreen;">■</span> Gym               | <span style="color: brown;">■</span> Mechanical / IT / Maintenance / Storage    |
| <span style="color: purple;">■</span> Media Center          | <span style="color: yellow;">■</span> Kitchen                                   |
| <span style="color: lavender;">■</span> Multi-Purpose       | <span style="color: lightblue;">■</span> Collaboration / Shared                 |

# Lafayette Field House



## BUILDING SCORE

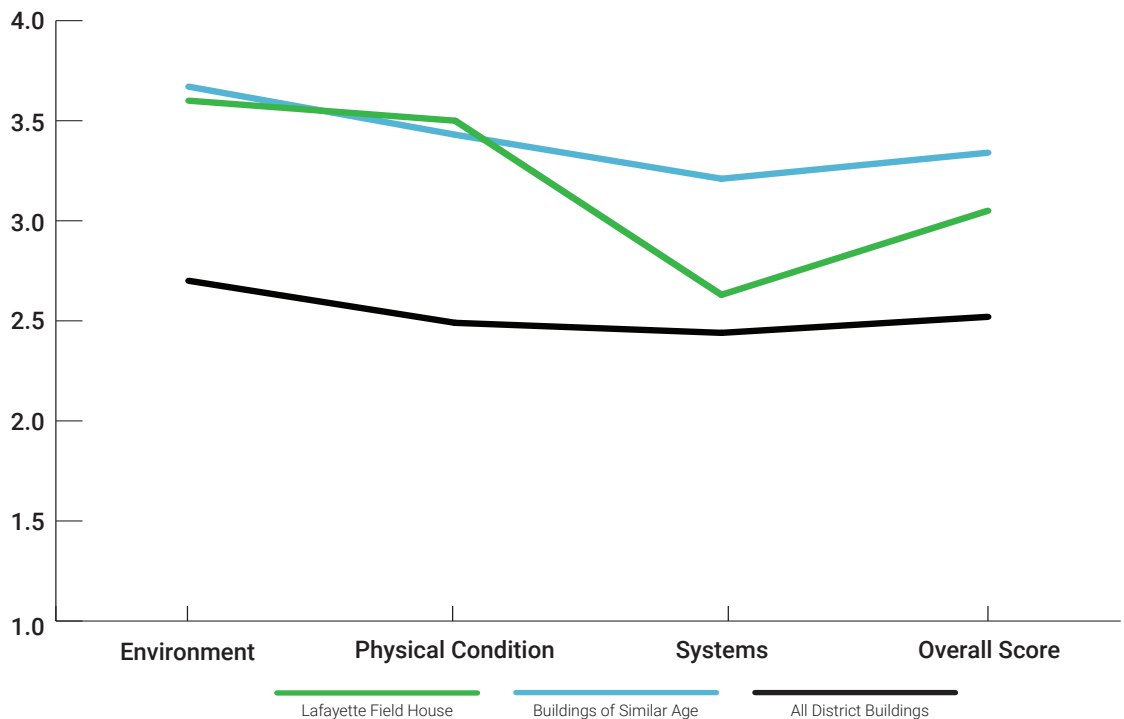
# 3.05

building score can range from 1.00 - 4.00

## ALL BUILDING SCORE AVERAGE

# 2.51

	Lafayette Field House	Buildings of Similar Age	All District Buildings
<b>ENVIRONMENT</b> Five factors ranked on a scale of 1-4	3.60	3.67	2.70
<b>PHYSICAL CONDITION</b> Condition of the building, site, and furnishings, ranked on a scale of 1-4	3.50	3.40	2.44
<b>SYSTEMS</b> Conditions of mechanical, electrical, and plumbing systems ranked on a scale of 1-4	2.63	3.21	2.43
<b>OVERALL SCORE</b> Average of all date points gathered	3.05	3.34	2.51



---

# Lafayette Field House

---

<b>CONSTRUCTION</b>	<b>BUILDING SQUARE FOOTAGE</b>	<b>6,180 SF</b>
	2014 Original	6,180 SF

---

---

**STRENGTH +  
CHALLENGES**

## **STRENGTHS**

- Integrity of the field house structure

## **CHALLENGES**

- Condition of pavement and minor support buildings
- Condition of bleachers
- Inadequate parking area and condition of paving

**DESCRIPTION**

The field house is an efficient response to a sloping site – maybe too efficient. It includes a modest amount of space, so the roof of its west side lower level is even with the adjacent ground. As a result, the building is fenced to prevent people from walking on the roof and damaging it. One-story areas of the building’s masonry require cleaning, and the two-story press box shows evidence of failing details that should be repaired to ensure the longevity of the building. Elsewhere on the athletic complex, the bleachers are not up to current design standards and a ticket booth and storage shed are built of simple wood construction that is not enduring well over time. Parking availability is limited and the paving is deteriorated. The site has steeply sloped areas on the perimeter that are difficult to maintain, and a steep parking entry.

**LAFAYETTE FIELD HOUSE**

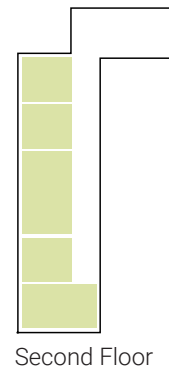
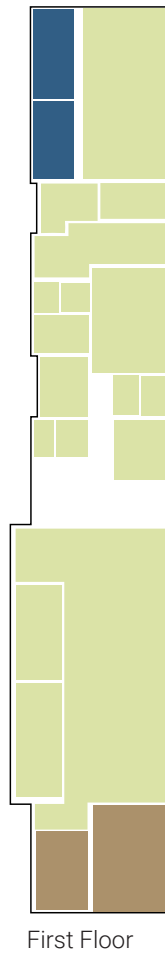
building score can range from 1.00 - 4.00

		Lafayette Field House	Buildings of Similar Age	All District Buildings
<b>PHYSICAL CONDITION</b>	Site	3.00	2.60	1.95
	Fields	N/A	3.33	2.48
	Bleachers	N/A	3.00	1.83
	Envelope	2.00	3.00	2.08
	Roofing	4.00	3.80	2.55
	Interior	4.00	3.71	2.65
	Furniture	4.00	4.00	3.09
	Specialty	4.00	3.75	2.86
<b>ENVIRONMENT</b>	Acoustics	4.00	3.50	3.09
	Daylight & Views	4.00	4.00	3.48
	Safety & Security	2.00	3.67	2.28
	Way finding	4.00	4.00	1.63
	Thermal Comfort	4.00	3.20	3.00
<b>SYSTEMS</b>	HVAC	4.00	3.60	2.82
	Plumbing	4.00	3.60	3.27
	Electrical	2.00	2.80	2.05
	Electrical Power	2.00	3.60	2.61
	Electrical Systems	2.00	3.00	2.08
	Electrical Safety & Security	1.00	2.57	2.31
	Interior Lighting	3.00	3.00	2.64
	Exterior Lighting	3.00	3.50	1.64
<b>GRAND TOTAL</b>		3.05	3.34	2.51

**2018-19 SPACE UTILIZATION**

not to scale

↑ north



- |   |   |
|---|---|
| <span style="color: red;">■</span> Classrooms               | <span style="color: cyan;">■</span> Maker Space                                 |
| <span style="color: orange;">■</span> Special Programs      | <span style="color: maroon;">■</span> Dining Commons                            |
| <span style="color: brown;">■</span> Art                    | <span style="color: gray;">■</span> Administration / Counseling / Faculty Space |
| <span style="color: green;">■</span> Music   Band   Strings | <span style="color: blue;">■</span> Restrooms                                   |
| <span style="color: lightgreen;">■</span> Gym               | <span style="color: tan;">■</span> Mechanical / IT / Maintenance / Storage      |
| <span style="color: purple;">■</span> Media Center          | <span style="color: yellow;">■</span> Kitchen                                   |
| <span style="color: lavender;">■</span> Multi-Purpose       | <span style="color: lightblue;">■</span> Collaboration / Shared                 |